

**P5 / CM**

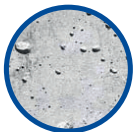
## Performance Level



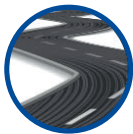
The P5-CM is a premium laser welded multi-purpose diamond blade. It is ideally suited for; utility contractors, civil engineers, landscape gardeners, roofing contractors, construction companies & general builders. The range of materials the P5-CM can be used to cut is endless and includes; reinforced concrete, concrete, asphalt, asphalt over concrete, engineering brick, clay products, construction materials, block paving, bricks, blocks, roof tiles & building materials. The versatility is possible due to a mix of three different segment types, all with high levels of diamond concentration and well designed bonds to insure they interact perfectly with one another.



- Three different segment types
- Soft bond turbo segments for hard materials
- Hard bond deep draft segments to protect the steel core
- Medium bond segments to stabilize the all-round performance
- Cooling slots & holes
- Fast cutting
- Long life



**UNIVERSAL CONCRETE**



**ASPHALT**



**HARD MATERIALS**



**UNIVERSAL STONE**



**BUILDING MATERIALS**

## Applications

**Ideally suited:** Class A engineering bricks, clay products, flint aggregate concrete, class B engineering bricks, heavily reinforced concrete, medium reinforced concrete, lightly reinforced concrete, concrete slabs, kerbs, pipes, beams, concrete flag stones, York stone, concrete paviors, general facing bricks, hand-made bricks, concrete roof tiles, lightweight concrete blocks, green concrete, cement screed, abrasive sandstone, abrasive gritstone, hot rolled asphalt, asphalt over concrete & asphalt.

**Occasional use:** Slate, Indian sandstone & grante. Too much use on these materials could result in either overheating or rapid wear.

## Product Details

Part Number	Dimensions
DP16161	300 x 3.0 x 10 x 20mm (12")
DP16162	350 x 3.2 10 x 25.4mm (14")
DP16163	450 x 3.6 x 10 x 25.4mm (18")



## Standards

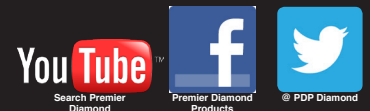
- EN13236: European Standard that regulates the safety requirements for super abrasive (diamond) products.
- ISO9001:2010 Quality Management System: Standard designed to help ensure organizations meet the needs of their customers.

## Tips & Maintenance for all Diamond Blades

- Make certain the blade is suitable for the material before cutting
- Carry out a slight pendulum movement during cutting (forwards, backwards)
- Keep the maximum amount of diamonds exposed by regularly cutting into a highly abrasive material, such as a 3-Newton building block or soft sandstone.

## PREMIER DIAMOND PRODUCTS LTD

Unit 21, Chislet Close | Lakesview International Business Park  
Hersden, Canterbury | Kent, CT3 4LB. UK  
Tel: + (0)1227 711555 | Fax: + (0)1227 710540  
E-mail: [info@premierdiamondproducts.co.uk](mailto:info@premierdiamondproducts.co.uk)  
[www.premierdiamondproducts.co.uk](http://www.premierdiamondproducts.co.uk)



**CUTTING EDGE TECHNOLOGY**

